



## **Addendum No. 1**

**DATE: November 8, 2016**

Joliet Junior College  
1215 Houbolt Road  
Joliet, IL 60431

**TO:** Prospective Respondents  
**SUBJECT:** Addendum No. 1  
**PROJECT NAME:** Event Center Graphics Rebid  
**JJC PROJECT NO.:** R16034R

This Addendum forms a part of the Bidding and Contract Documents and modifies the original bidding document as posted on the JJC website. Acknowledge receipt of this addendum in the space provided on the Bid Form. FAILURE TO DO SO MAY SUBJECT BIDDER TO DISQUALIFICATION.

---

### **Additional Documents:**

Attached to this addendum are drawings for the Event Center Graphics Rebid.

**End of Addendum #1**

# JOLIET JUNIOR COLLEGE

## EVENT CENTER

---

1215 HOUBOLT ROAD, JOLIET, IL 60431

GRAPHICS BID PACKAGE

DKA PROJECT NO: 16-025

2016-08-31

### SHEET INDEX:

A13.01 ELEVATIONS  
A13.02 ELEVATIONS



#### ARCHITECT:

DEMONICA KEMPER ARCHITECTS  
125 N. HALSTED ST., SUITE 301  
CHICAGO, IL 60661  
T: 312.496.0000 F: 312.496.0001

#### STRUCTURAL AND MEP ENGINEERING

KJWW ENGINEERING CONSULTANTS  
1100 WARRENVILLE RD., STE. 400W  
NAPERVILLE, IL 60563  
P: 630.527.2320

#### CIVIL ENGINEERING

RUETTIGER, TONELLI & ASSOC., INC.  
129 CAPISTA DR.  
SHOREWOOD, IL 60404  
P: 815.744.6600

KEY PLAN:

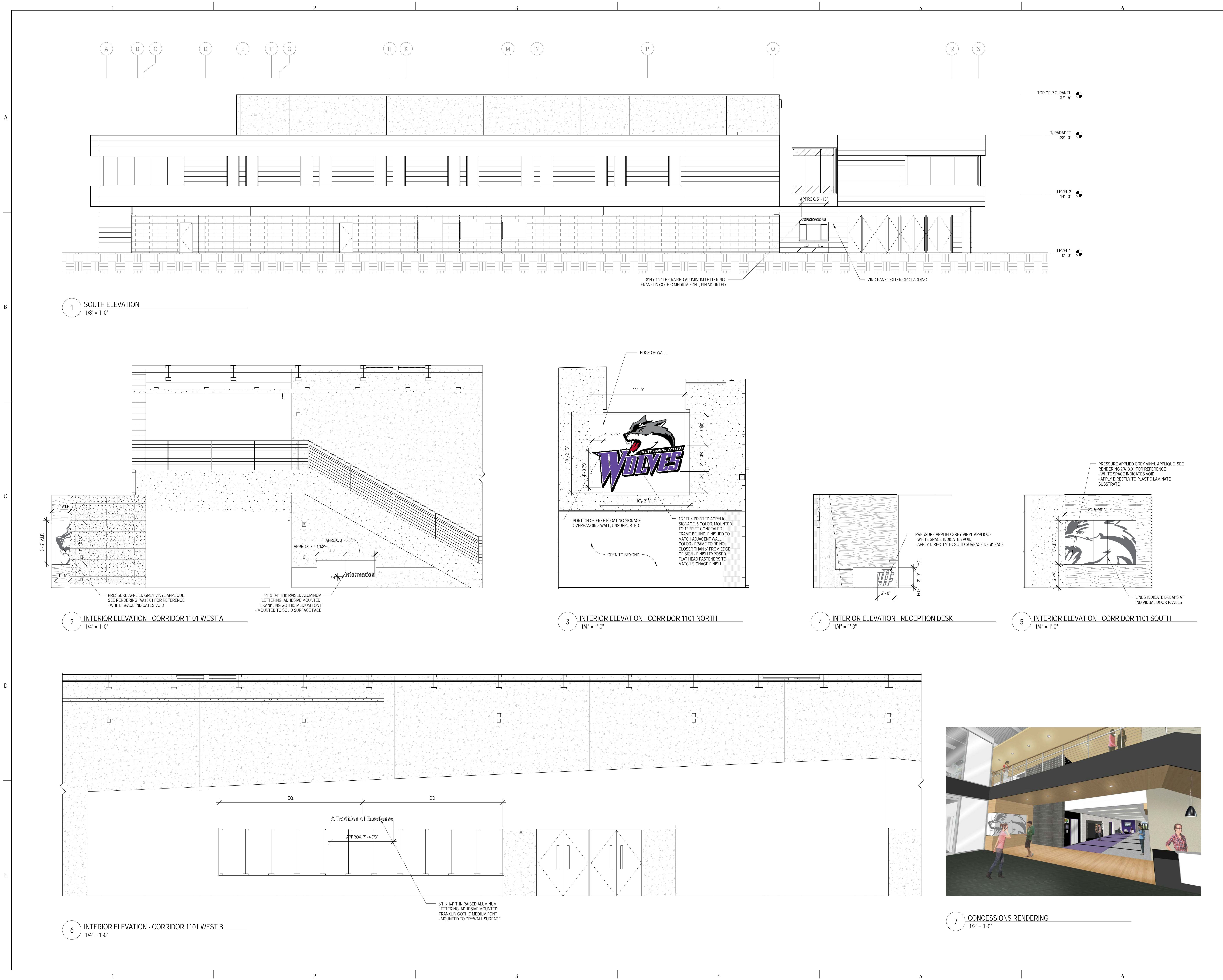
SHEET STATUS: 08/31/16  
**GRAPHICS BID  
 PACKAGE**

NO.	DESCRIPTION:	DATE:

SHEET TITLE:  
**ELEVATIONS**

SHEET NUMBER:

**A13.01**



**1 SOUTH ELEVATION**  
 1/8" = 1'-0"

**2 INTERIOR ELEVATION - CORRIDOR 1101 WEST A**  
 1/4" = 1'-0"

**3 INTERIOR ELEVATION - CORRIDOR 1101 NORTH**  
 1/4" = 1'-0"

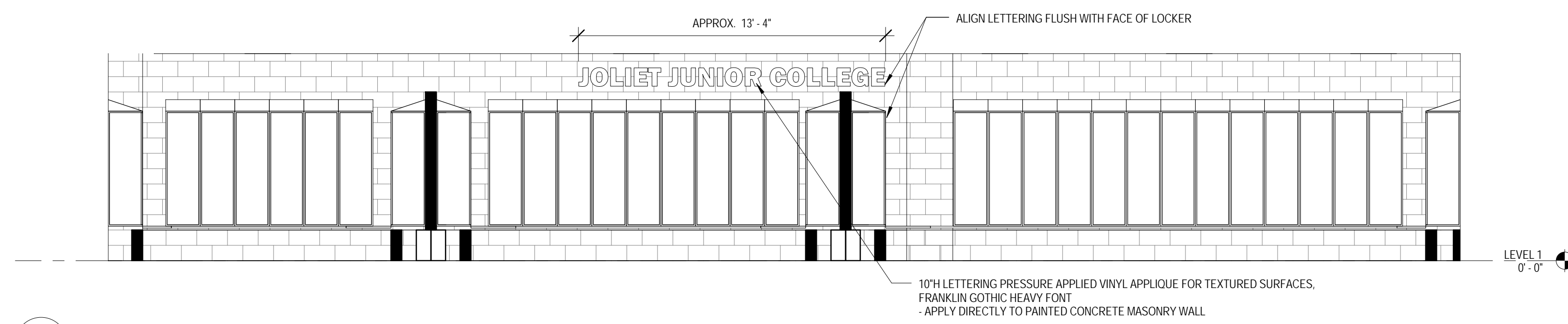
**4 INTERIOR ELEVATION - RECEPTION DESK**  
 1/4" = 1'-0"

**5 INTERIOR ELEVATION - CORRIDOR 1101 SOUTH**  
 1/4" = 1'-0"

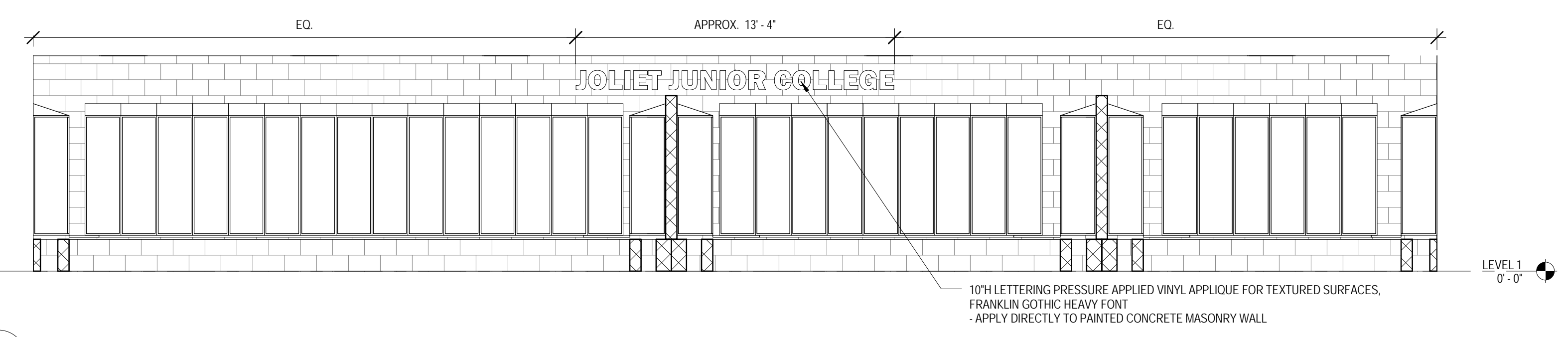
**6 INTERIOR ELEVATION - CORRIDOR 1101 WEST B**  
 1/4" = 1'-0"

**7 CONCESSIONS RENDERING**  
 1/2" = 1'-0"

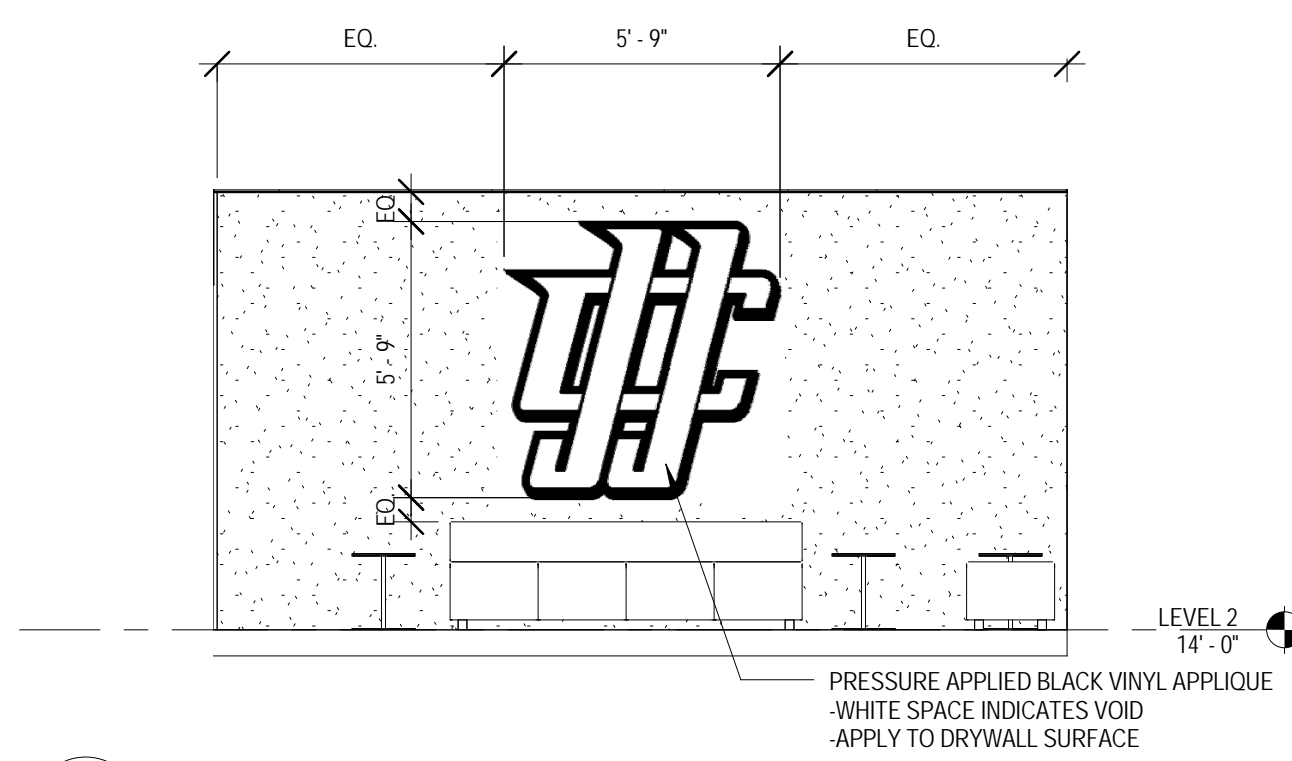
NO.	DESCRIPTION:	DATE:



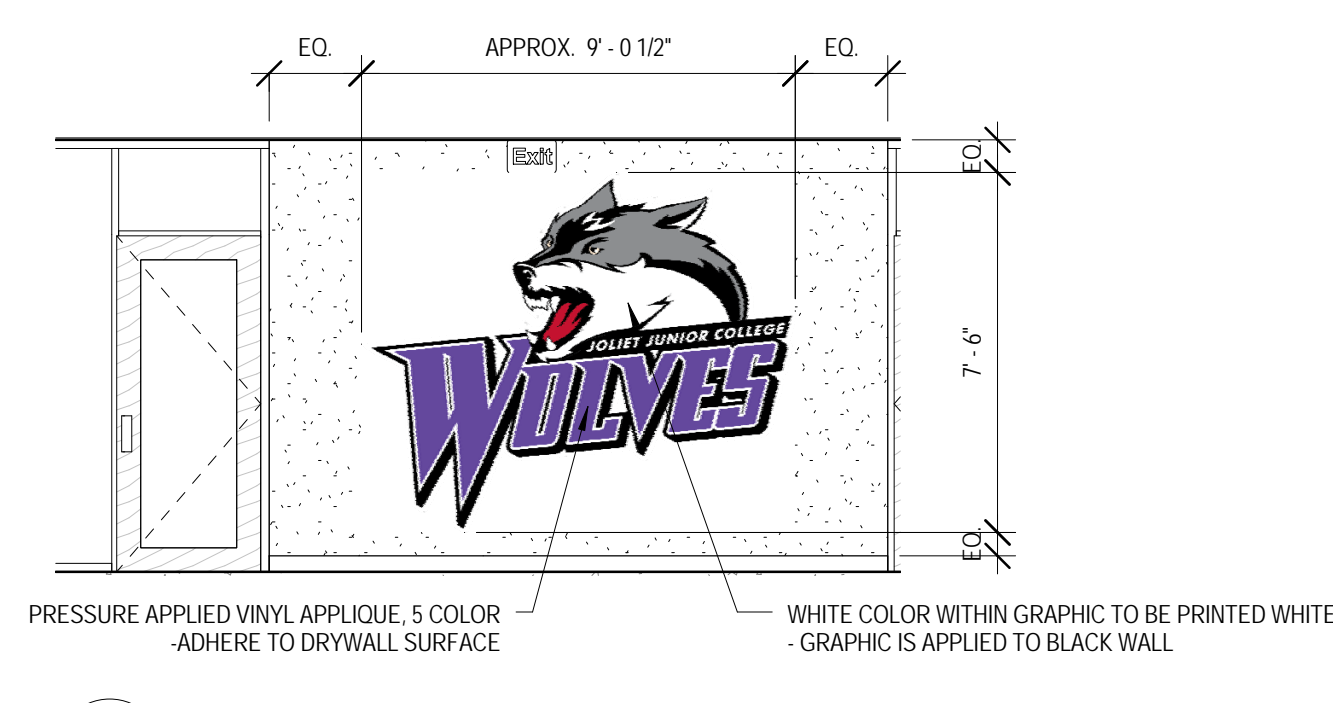
1 MENS LOCKER ROOM 1013 WEST  
 1/4" = 1'-0"



2 WOMENS LOCKER ROOM 1011 EAST  
 1/4" = 1'-0"



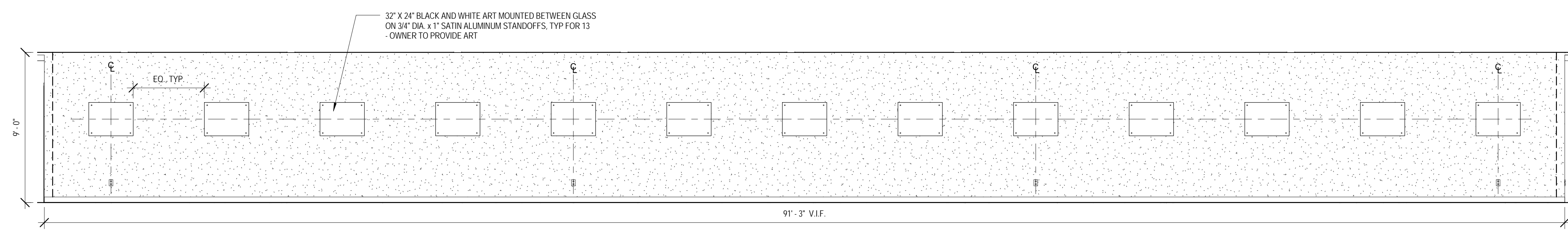
3 INTERIOR ELEVATION - ELEVATOR LOBBY WEST  
 1/4" = 1'-0"



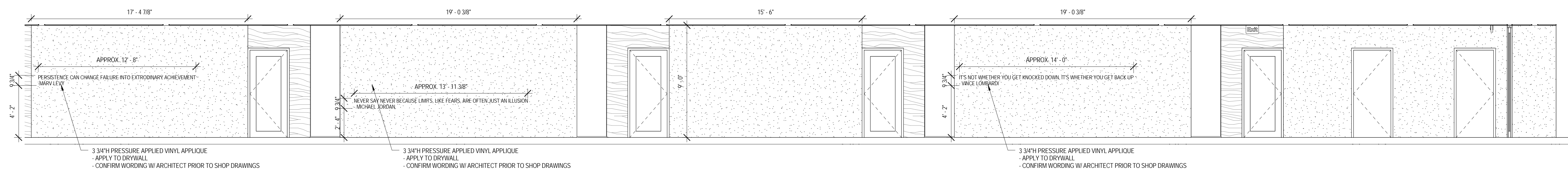
4 INTERIOR ELEVATION - WAITING AREA 2109 WEST  
 1/4" = 1'-0"



5 BANNERS  
 1/2" = 1'-0"



6 INTERIOR ELEVATION - CORRIDOR 2106 SOUTH  
 1/4" = 1'-0"



7 INTERIOR ELEVATION CORRIDOR 2106 NORTH  
 1/4" = 1'-0"